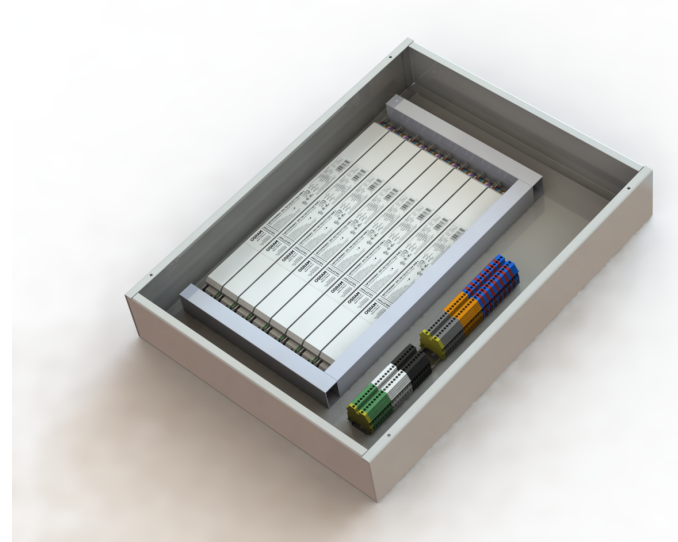


PROJECT	TYPE
---------	------

## SFURDE Universal Remote Driver Enclosure

Softform Lighting light forms are ideal for MRI suite applications. However, the LED driver hardware must be remotely mounted outside of the MRI suite itself. SoftForm's Remote Driver Enclosure (RDE) makes this process easy. Include up to 11 drivers in one NEMA-1 wall-mounted enclosure.



**Construction** - 16 gauge steel

**Finish** - ANSI 61 gray polyester powder finish

**Electrical** - Driver input voltage 120 - 277 V. All driver inputs and outputs prewired to feed-through terminal blocks. Nominal Voltage: 600 V, Nominal Current: 20 A, Connection Method: Screw, 12-26 AWG, Number of Connections per terminal block: 2. For MRI applications **All Outputs Require MRI Complaint Filtering**.

**Control Integration** - 0-10V low voltage, 10% dimming standard.

**Mounting** - Wall, surface

## MRI FILTERING BY OTHERS

Specification Nomenclature				
SFURDE				Notes
Series	Light Form Type <sup>1</sup>	Light Form Quantity	Lumens <sup>2</sup>	
<b>SFURDE</b>	<b>44</b> Recessed 4 x 4 <b>46</b> Recessed 4 x 6 <b>48</b> Recessed 4 x 8 <b>24</b> Recessed 2 x 4 <b>22</b> Recessed 2 x 2 <b>18</b> Recessed 1 x 8 <b>14</b> Recessed 1 x 4	<b>Qxx</b> Q + number	<b>LO</b> Low Output <b>SO</b> Standard Output <b>HO</b> Standard Output	1. Ordered separately 2. See Light Form submittals for photometry details 3. Enclosures 24" high and 12", 18" or 24" wide. Factory will calculate the number of drivers and enclosures required unless otherwise specified.